



SEIPO®

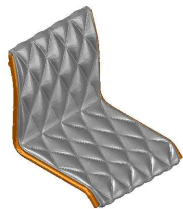
Rev. 00  
Data Date  
24/09/2021

Emissione Issuance  
Approvazione Approval

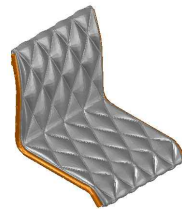
# Schema di montaggio

# Assembly diagram

Componenti  
Components

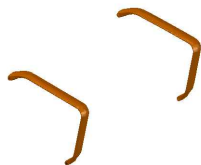


Scocca bassa  
x1 (A)  
Low backrest  
x1 (A)

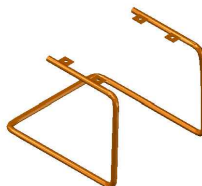


Scocca bassa  
x1 (A)  
Low backrest  
x1 (A)

SERIE  
ROMBO  
ROMBO  
SERIES



Bracciolo x2  
(B)  
Armrest x2  
(B)



Base a slitta  
x1 (C)  
Cantilever  
base x1 (C)



R013 - R028

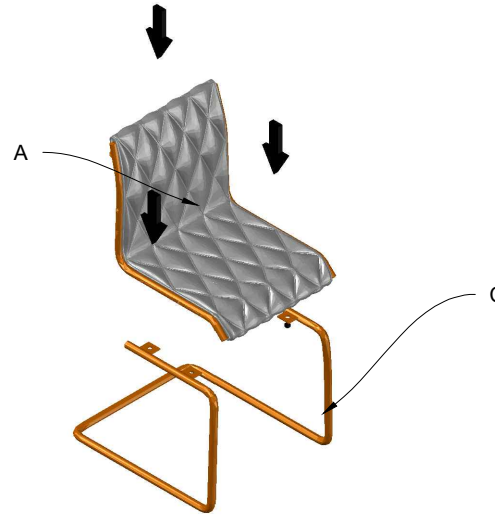


R015 - R030

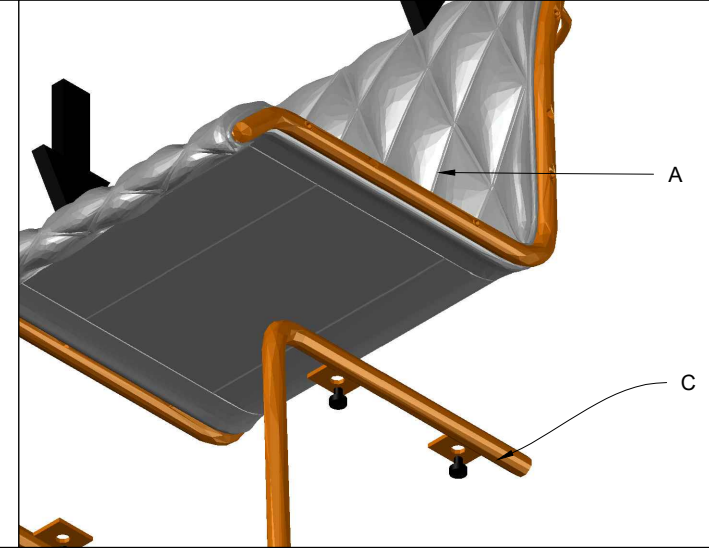
- 1) Uscire la seduta dalla scatola  
1) Extract the chair from the box



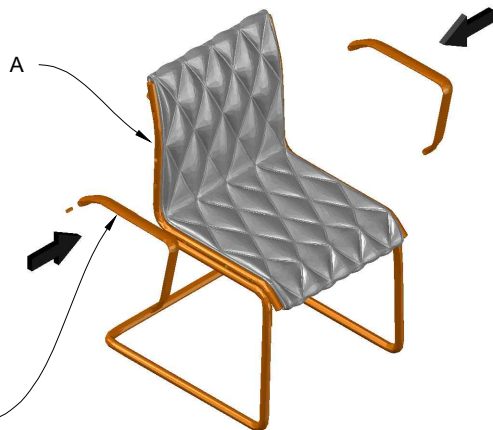
- 2) Fissare la base a slitta (C) nella scocca (A)  
2) Fasten the cantilever base (C) to the body (A)



- 3) Fissaggio della slitta (C) alla scocca (A) tramite i bulloni  
3) Fasten the cantilever base (C) to the body (A) by means of the bolts



- 4) Fissare i braccioli (B) alla scocca (A).  
4) Fasten the armrests (B) to the body (A)



- 5) Inserimento dei braccioli (B) alla scocca (A) tramite i bulloni da inserire nei fori.  
5) Insert the armrests (B) in the body (A) by means of the bolts in the pre-drilled holes

